

Payments Installer Database  
Setup Oracle Banking Payments  
Release 14.7.4.0.0  
[June] [2024]



---

# Table of Contents

**TABLE OF CONTENTS ..... 1-1**

**1. INSTALLING ORACLE BANKING PAYMENTS DATABASE ..... 1-1**

- 1.1 INTRODUCTION ..... 1-1
- 1.2 PRE-REQUISITES ..... 1-1
- 1.3 CREATING SCHEMA BY IMPORTING FULL DUMP ..... 1-1
- 1.4 CREATING SCHEMA FROM SHIPMENT MEDIA ..... 1-1
  - 1.4.1 *Backend Setup using Silent Installer* ..... 1-1
  - 1.4.2 *Co-deployment Set-up – Combining Payments With FCUBS* ..... 1-2
  - 1.4.3 *Basic Setup using GUI Installer* ..... 1-3

---

# 1. Installing Oracle Banking Payments Database

## 1.1 Introduction

Oracle Banking Payments database can be installed in one of the following methods:

- Import full dump – Import the Oracle Banking Payments objects into an empty schema using full dump. This is a manual activity.
- From shipment media – Load the shipment media objects into an empty schema using Installer.

## 1.2 Pre-Requisites

Below Privilege must be provided to the Database Schema from SYS Database User. These grants should be provided after schema creation and before the Installation.

1. ALTER USER ENABLE EDITIONS [FORCE];
2. GRANT CREATE ANY EDITION TO <SCHEMA NAME>
3. GRANT DROP ANY EDITION TO <SCHEMA NAME>
4. GRANT ALTER SESSION TO <SCHEMA NAME>
5. GRANT EXECUTE on DBMS\_SESSION TO <SCHEMA NAME>

## 1.3 Creating Schema by Importing Full Dump

Under this method, you need to manually import the Oracle Banking Payments DMP file into the

Oracle Banking Payments schema. This can be done using the following command:

```
$impdp user_name/password directory=dir_name dumpfile=dmp_file_name.dmp  
logfile=dmp_file_name.log remap_schema=from_schema_name:to_schema_name  
remap_tablespace=from_tablespace_name:to_tablespace_name transform=OID:n
```

## 1.4 Creating Schema from Shipment Media

Under this method, you need to create the schema from the shipment media.

### 1.4.1 Backend Setup using Silent Installer

Backend Setup has to be done using Silent Installer. DDL Compilation, Object Compilation and

Static Data Load will be taken care as part of Backend Setup.

Before loading objects into the schema, fcubs.properties file creation must be performed with the required database details using the GUI installer (Refer Payments\_Installer\_Property\_File\_Creation). After the property file is created, env.properties file, present in INSTALLER/SOFT/GUI/logs/ directory, will be automatically updated, with the details provided while creating the property file. The env.properties file present in INSTALLER/SOFT/GUI/logs/ will be automatically copied to INSTALLER/SOFT/logs/ directory as part of property file creation. Details from this env.properties are taken for further steps.

Run the <Product Processor>DBCompileRun.bat from INSTALLER/SOFT directory. DDL Compilation, Object Compilation and Static Data load will be done.

- a. First Run the SMSDBCompileRun.bat in windows (SMSDBCompileRun.sh in linux) for SMS schema (DB) compilation. Note: Before running DB Compilation of any sort, please make sure that System Date Time format and language are provided as English, or otherwise DB Compilation might fail due to improper log names.
- b. After SMS object loading is completed, Go to \INSTALLER\SOFT path and run the PMDBCompileRun.bat.- DDL Compilation, Object Compilation and Static Data load will be done. For Example: -Run PMDBCompileRun.bat in windows (PMDDBCompileRun.sh in Linux) Check for the Invalid Count and make sure that the Invalid count is '0'. Please run Invalid Recompilation script (fast.sql), if required. Please provide number of threads and schema name as input while running the script.



fast.sql

#### 1.4.2 Co-deployment Set-up – Combining Payments With FCUBS

- a. Copy below folders from Payments OSDC.zip to the FCUBS OSDC.zip.
  - INFRA\PM\*
  - INFRA\PS\*
  
- b. Copy the **PM** folder from Payments OSDC.zip to the FCUBS OSDC.zip.
  
- c. Copy all below files from folder **INSTALLER\SOFT\config\Application** from Payments OSDC.zip to the **INSTALLER\SOFT\config\Application** of FCUBS OSDC.zip.
  - AntLibrary\_PM.xml
  - FCJ\_applicationPM.xml
  - FCJ\_applicationPMFasterPay.xml
  - FCJ\_applicationPMGateway.xml
  - FCJ\_applicationPMRest.xml
  - MANIFEST\_PM.properties
  - PM.properties
  
- d. Please add entry for FCPMTS to the file FCHome.ini located in FCUBS OSDC.zip from FCHome.ini located in Payments OSDC.zip with the value of proper patchset no for eg as below

- e. Goto \INSTALLER\SOFT path and execute the ROFCDBCompileRun.bat bat file in windows (ROFCDBCompileRun.sh in linux) for FCUBS + Payments- DDL Compilation and Object Compilation.
  
- f. For Cluster : As part of FCUBS\_14.0.0.0.1 patch set Mexico Localization changes are released in cluster mode. So from FCUBS\_14.0.0.0.1 patch onwards if any site wants to consume these changes, needs to run the ROFCDBCompileClusterRun.bat in windows(ROFCDBCompileClusterRun.sh in linux).
  - i. This is for KERNEL as well as cluster objects in DB schema.
  - ii. Similarly, FCUBS\_14.3.0.2.0 patch set onwards, if any Site wants to consume Italy Cluster changes, then they need to run the ROFCDBCompileClusterRun.bat in windows (ROFCDBCompileClusterRun.sh in linux).

### **1.4.3 Basic Setup using GUI Installer**

Oracle FLEXCUBE Universal Installer will list the Utilities based on the Configuration mode selected.

#### **Utilities – Normal Configuration Mode**

When the configuration mode is selected as 'Normal', existing list of utilities will be displayed.

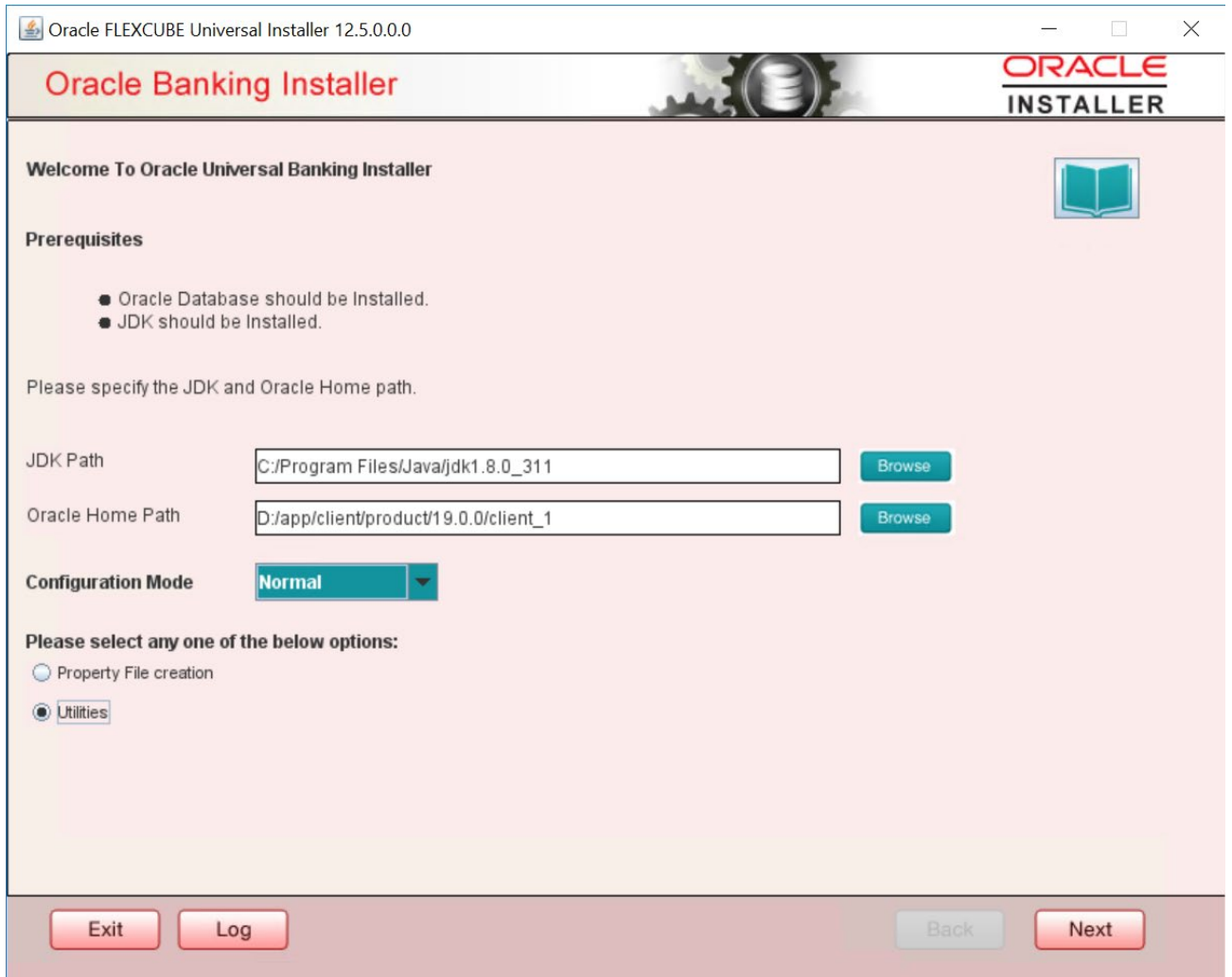
- Day Zero Setup
- User Creation
- Reports DSN Entries
- Entity Details
- SMS DSN Entries
- Switch Monitor Installation
- Env Property file operations
- Block Chain

Day zero setup of normal configuration mode will be explained in detail in this document.

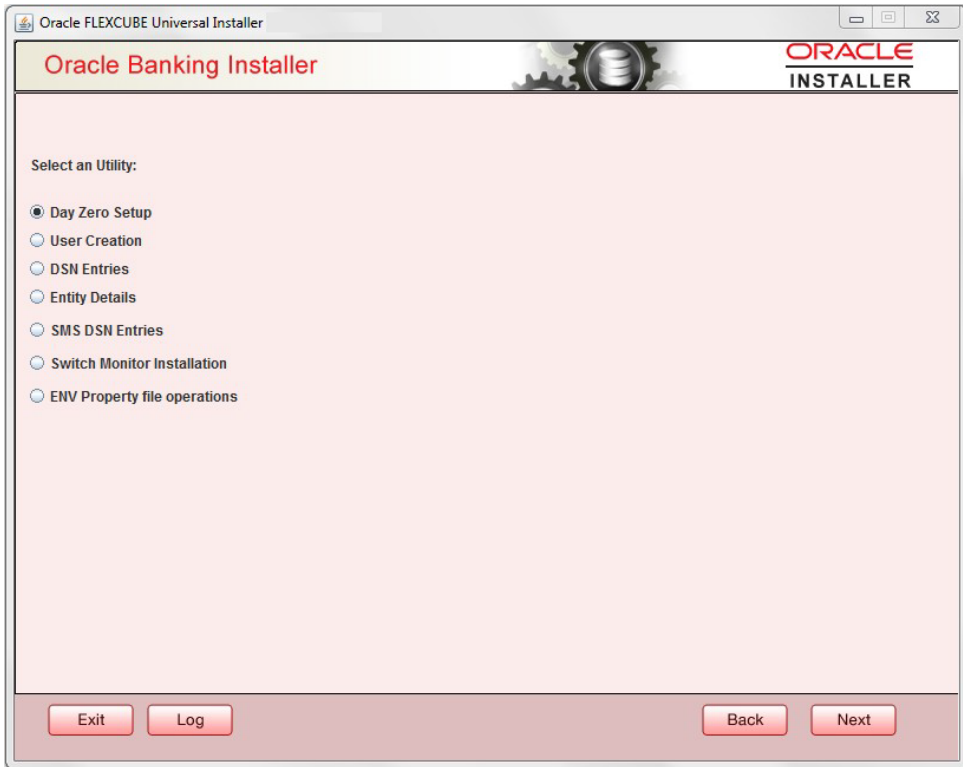
#### **Day Zero Setup – Normal Configuration Mode**

The steps to load objects from the shipment media are given below:

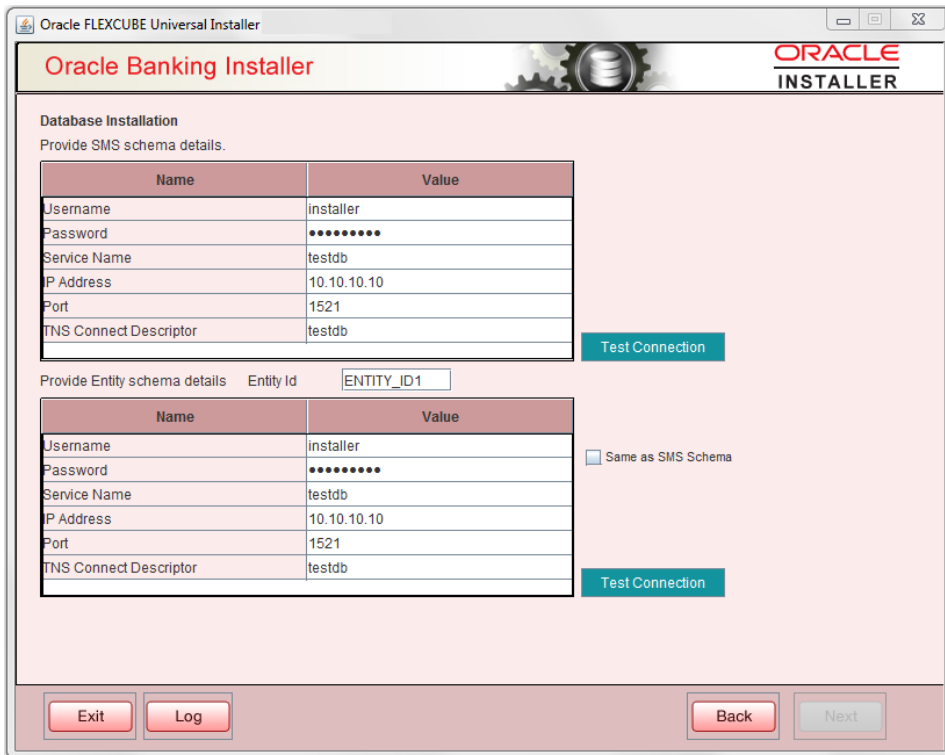
1. Double-click 'FCUBSInstaller.bat' batch file to launch Oracle Banking Payments Installer. The following screen is displayed. Select Configuration mode as 'Normal' and select Utilities option and click 'Next' button.



2. Select 'Day Zero Setup' in Utility Screen and click 'Next' as shown below.



3. Click 'Next' and in the below screen. Payments Schema details to be entered.



Specify the following schema details:

**User Name**

Specify the user name to access the schema.

**Password**

Enter the schema password.

**Service Name**

Provide service name of database.

**IP Address**

Specify the IP address of the system where the database schema is installed. Note: IP Address should be same as mentioned in the TNSnames.ora

**Port**

Specify the port number.

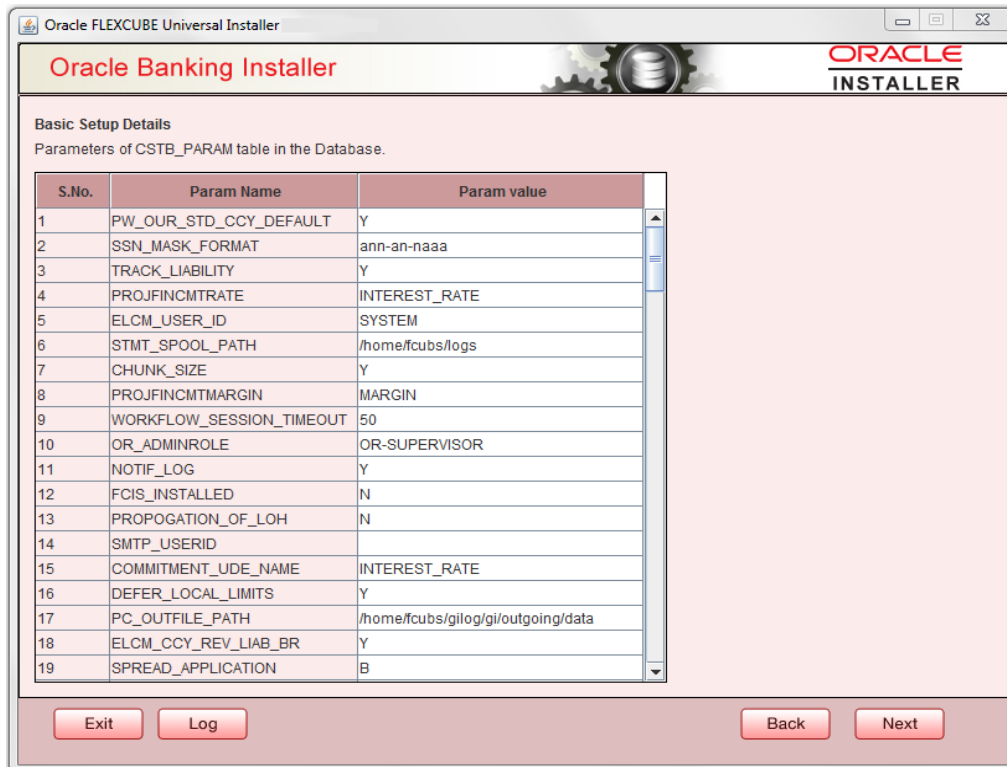
**TNS Connect Descriptor**

Specify the TNS Connect Descriptor.

- Here Entity Schema is mandatory, at least minimum one entry should be provided.
- Entity Id value is default i.e. 'ENTITY\_ID1' for first entry.
- Provide the JNDI Name for the ENTITY\_ID1. By default the jndi name is 'jdbc/fcjdevDS'
- Give the Schema Details for the Entity1.
- Here Compile In All Entities Field is 'N'. (As using the Single Entity Concept).

4. Click 'Next' and the following screen is displayed:



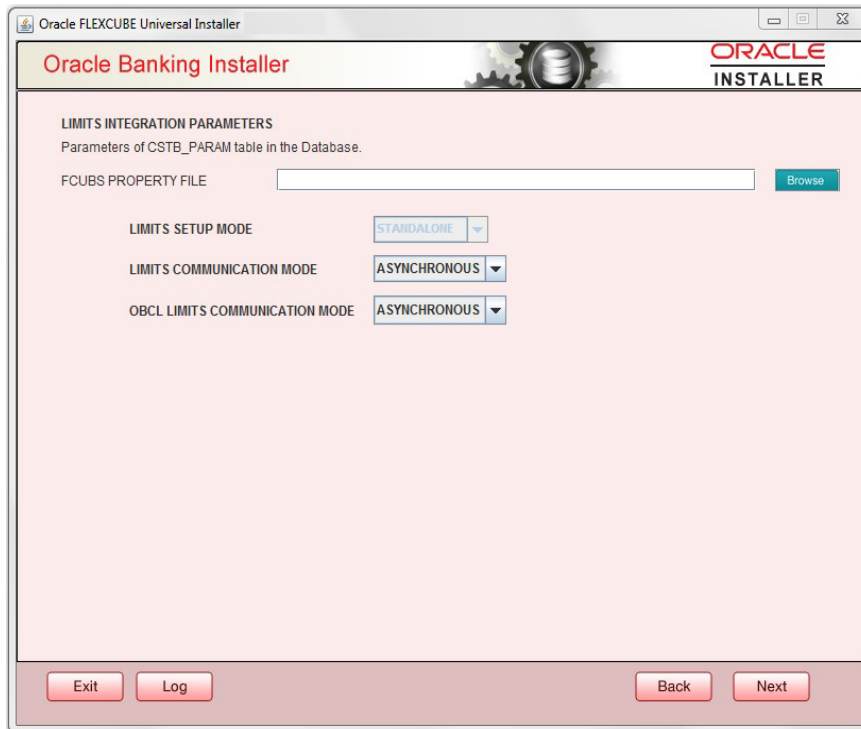


Screen displays basic setup details for table 'CSTB\_PARAM'.

Here Oracle directory name (present in all\_directories table in the schema) must be added for WORK\_AREA and TRACE\_AREA. Oracle directory name must be added for other required parameters also.

Oracle directory creation in the schema can be done as below : Create or replace directory dir\_name as 'directory\_path';

5. Click on 'Next' button to display Limits integration Parameters Screen as shown below:



Limits Integration Parameters will be set based on values read from fcubs.properties file browsed.

In case of ELCM Embedded, Limit Communication mode will be Asynchronous by default. These parameters will be updated in CSTB\_PARAM table.

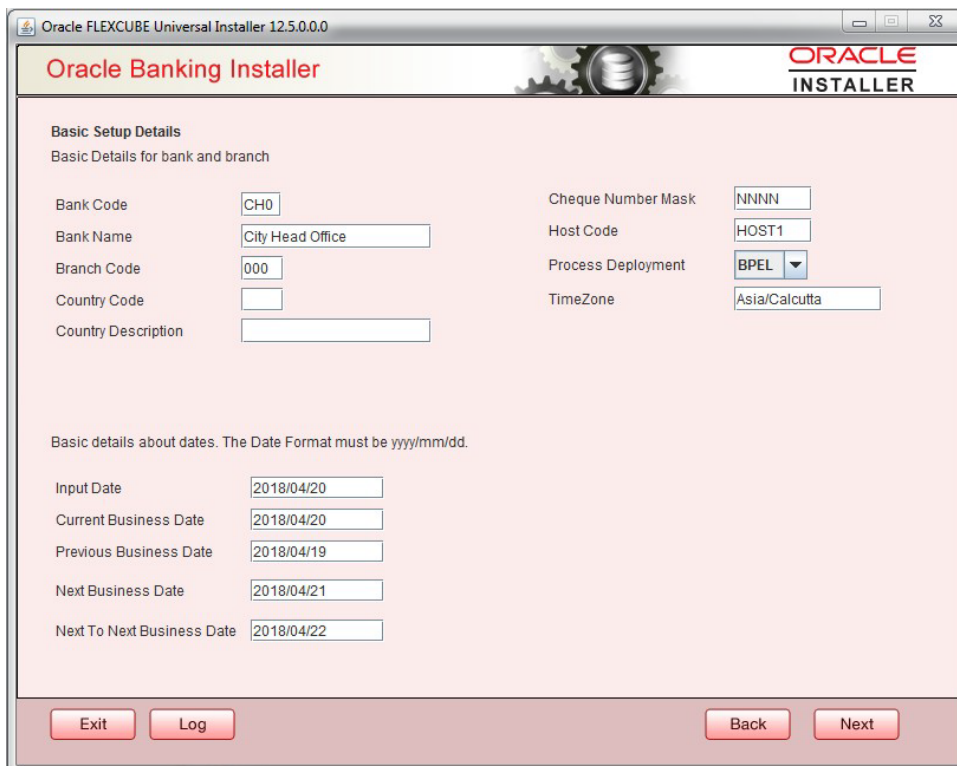
6. Click on 'Next' button .Screen displays parameters for table SMTB\_MODULES\_GROUP

If any change is required in the JNDI name, edit the same and click on Update.

**Note:** SMTB\_MODULES\_GROUP for FCELCM (Oracle ELCM) with the JNDI name '<ENTITY\_ID JNDI name>\_EL'. For example, if the ENTITY\_ID JNDI name is 'jdbc/fcjdevDS', then you need to update JNDI name 'jdbc/fcjdevDS\_EL'.



7. Click 'Next'. The following screen is displayed.



Screen displays basic setup details for bank and branch

**Bank Code**

Enter the bank code.

**Bank Name**

Enter the bank name.

**Branch Code**

Enter the branch code.

**Country Code**

Enter the Country code.

**Country Description**

Enter the Country Description.

**Cheque Number Mask**

Enter the Cheque Number Mask

**Process Deployment**

Choose mode of process deployment between BPEL and BPMN

Screen also displays basic setup details for dates.

**Input Date**

Enter the input date.

**Current Business Date**

Enter the current business date.

**Previous Business Date**

Enter the previous business date.

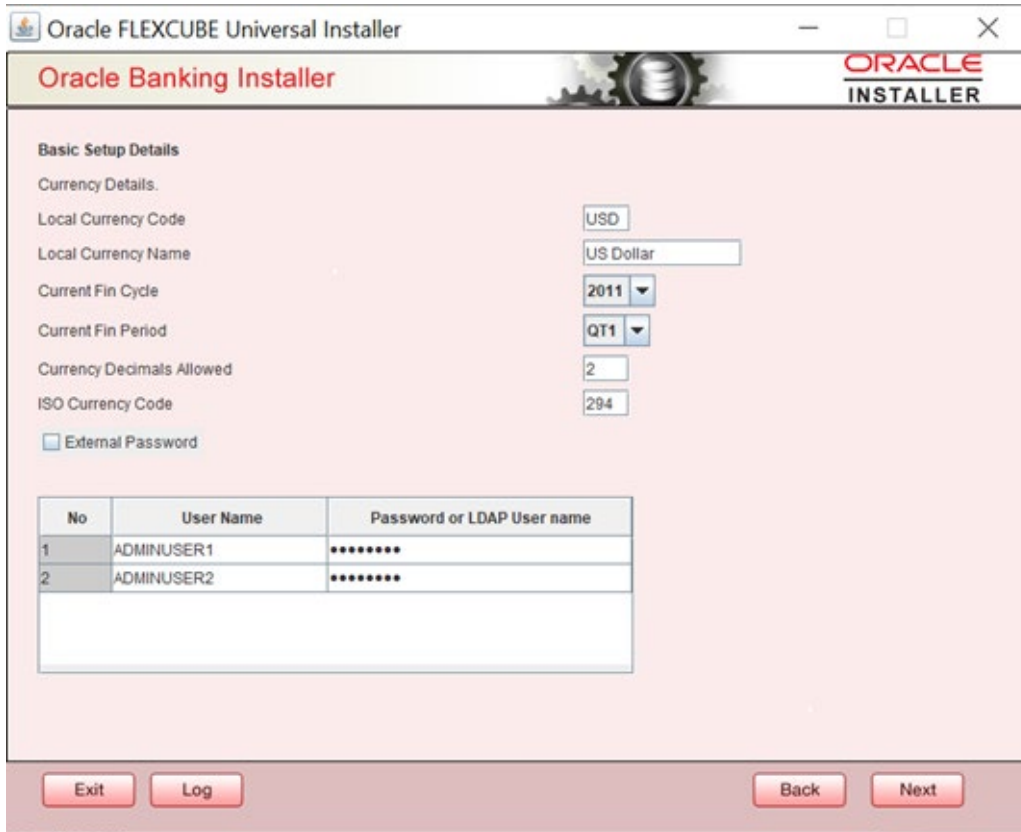
**Next Business Date**

Enter the next business date.

**Next to Next Business Date**

Enter the next to next business date.

8. Click 'Next'. The following screen is displayed.



Screen displays basic setup details for currency, User can change them.

**Local Currency Code**

Enter Local Currency Code

**Local Currency Name**

Enter Local Currency Name

**Current Fin Cycle**

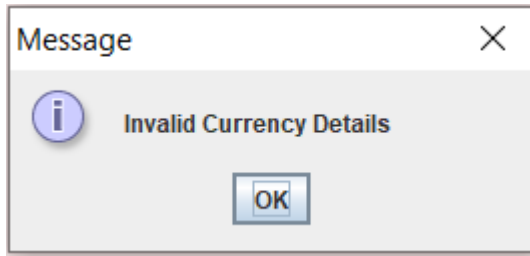
Enter Current Financial Cycle (any year from 2011 to 2050)

**Current Fin Period**

Enter Current Financial Period (QT1 to QT4, M01 to M12)

**Currency Decimals Allowed**

Enter the number of decimals allowed for the currency. The value should be an input between 0 and 3 (inclusive). Else below error alert is shown



### **ISO Currency Code**

Enter ISO Currency Code.

Screen also displays basic setup details for the creating a user in FLEXCUBE.

Creation of 'SYSTEM' user is mandatory for payments processing, it needs to be created as part of static data setup.

### **External Password**

Check this box to specify the external password.


### **User Name**

Displays the user name. Change the user name if required.

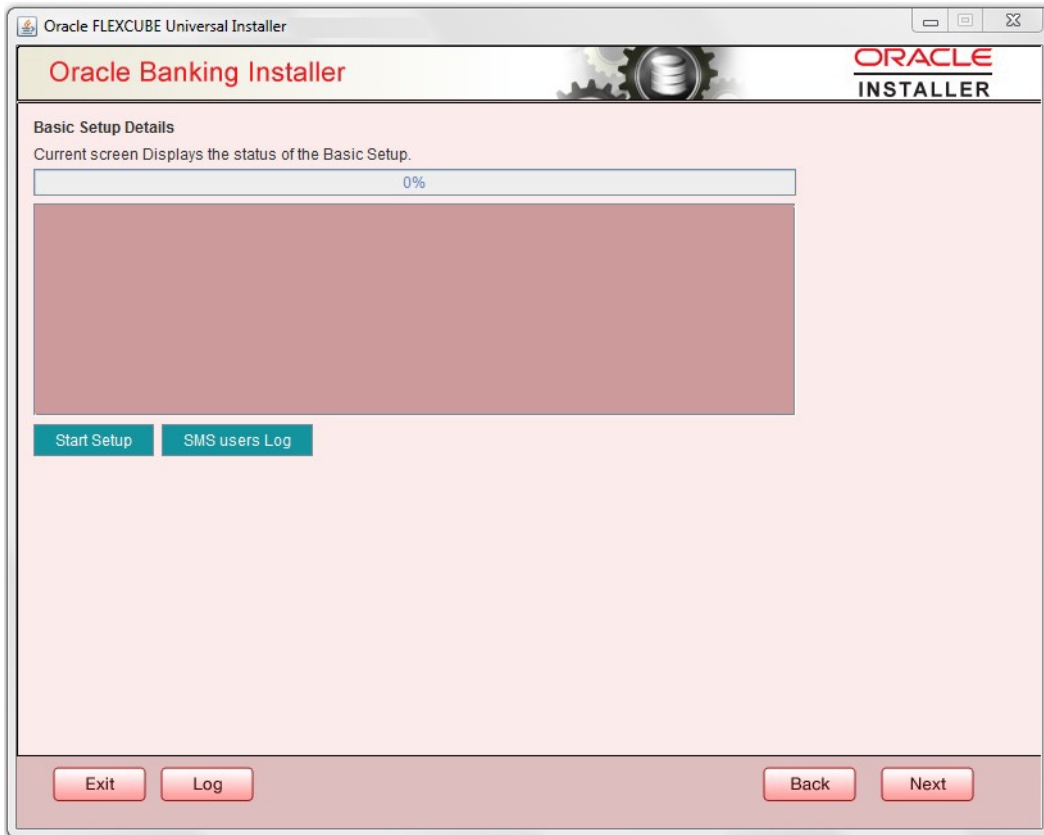
### **Password or LDAP User Name**

Specify the password and it is mandatory. You can use the following characters in the password:

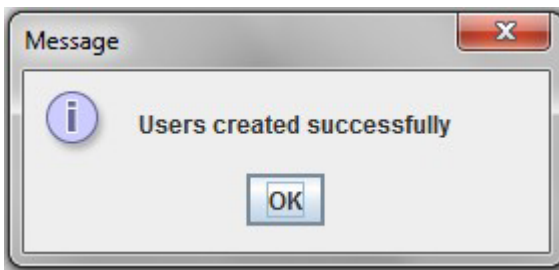
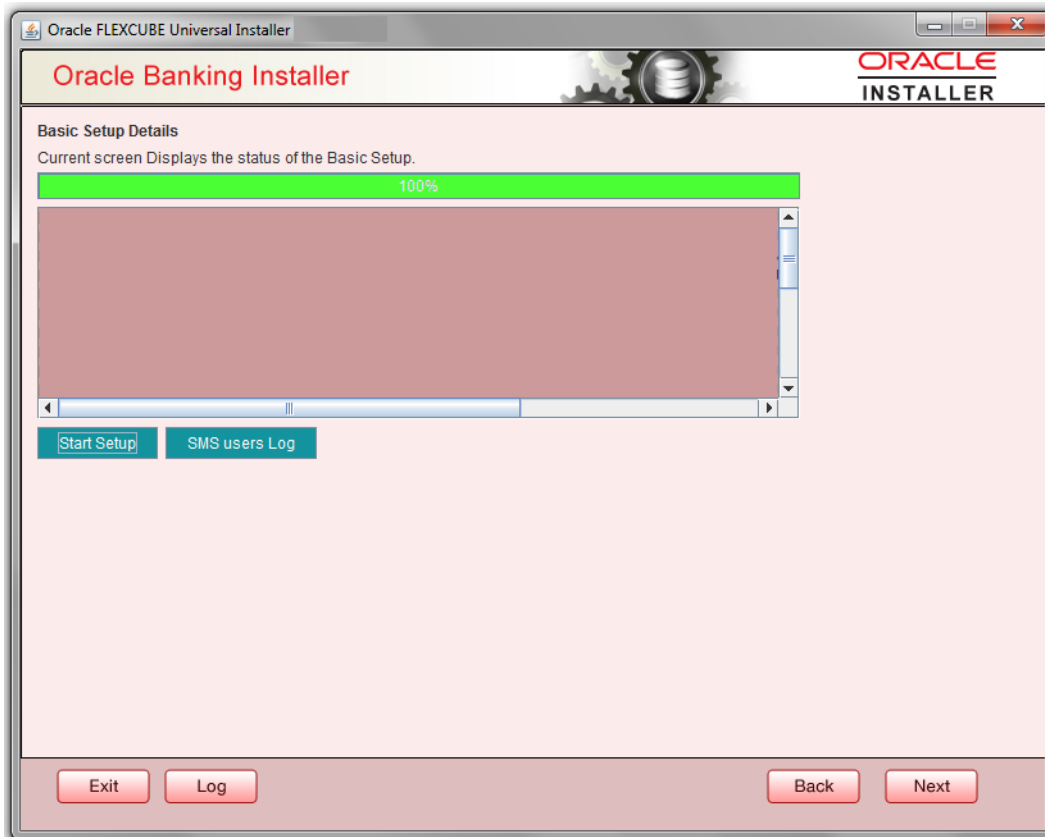
- Alphabets in uppercase
- Alphabets in lowercase
- Numerals

 You cannot use '\_' (underscore) in the password.

9. Click 'Next' and the following screen is displayed:



10. Click 'Start Setup' button to compile the entries. On completion the below Screen will be seen.  
User created logs can be viewed by clicking SMS users Log button.



JNDI name in Smtb\_Modules\_group table need to be updated manually.

This completes the basic setup process.





Oracle Banking Payments Payments Installer Database Setup  
[June] [2024]  
Version 14.7.4.0.0

Oracle Financial Services Software Limited  
Oracle Park  
Off Western Express Highway  
Goregaon (East)  
Mumbai, Maharashtra 400 063  
India

Worldwide Inquiries: Phone: +91 22 6718 3000  
Fax: +91 22 6718 3001  
[www.oracle.com/financialservices/](http://www.oracle.com/financialservices/)

Copyright © 2007, 2024 Oracle and/or its affiliates. All rights reserved.

Oracle and Java are registered trademarks of Oracle and/or its affiliates. Other names may be trademarks of their respective owners.

**U.S. GOVERNMENT END USERS:** Oracle programs, including any operating system, integrated software, any programs installed on the hardware, and/or documentation, delivered to U.S. Government end users are "commercial computer software" pursuant to the applicable Federal Acquisition Regulation and agency-specific supplemental regulations. As such, use, duplication, disclosure, modification, and adaptation of the programs, including any operating system, integrated software, any programs installed on the hardware, and/or documentation, shall be subject to license terms and license restrictions applicable to the programs. No other rights are granted to the U.S. Government.

This software or hardware is developed for general use in a variety of information management applications. It is not developed or intended for use in any inherently dangerous applications, including applications that may create a risk of personal injury. If you use this software or hardware in dangerous applications, then you shall be responsible to take all appropriate failsafe, backup, redundancy, and other measures to ensure its safe use. Oracle Corporation and its affiliates disclaim any liability for any damages caused by use of this software or hardware in dangerous applications.

This software and related documentation are provided under a license agreement containing restrictions on use and disclosure and are protected by intellectual property laws. Except as expressly permitted in your license agreement or allowed by law, you may not use, copy, reproduce, translate, broadcast, modify, license, transmit, distribute, exhibit, perform, publish or display any part, in any form, or by any means. Reverse engineering, disassembly, or decompilation of this software, unless required by law for interoperability, is prohibited.

The information contained herein is subject to change without notice and is not warranted to be error-free. If you find any errors, please report them to us in writing.

This software or hardware and documentation may provide access to or information on content, products and services from third parties. Oracle Corporation and its affiliates are not responsible for and expressly disclaim all warranties of any kind with respect to third-party content, products, and services. Oracle Corporation and its affiliates will not be responsible for any loss, costs, or damages incurred due to your access to or use of third-party content, products, or services.